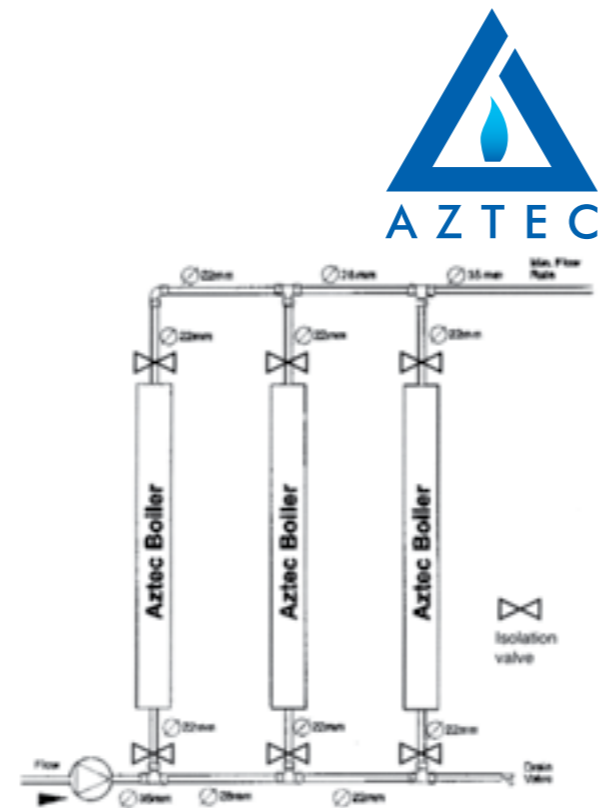


Dimensions and Specifications

MODEL	AZTEC-2	AZTEC-6	AZTEC-9	AZTEC-11	AZTEC-12
OUTPUT kW	2	6	9	11	12
LENGTH mm	550	825	1080	1080	1080
DEPTH mm	143	143	143	143	143
WIDTH mm	165	165	165	165	165
WEIGHT Kg	7.0	8.1	10.6	10.8	10.8
WATER CONTENT ltr	1.0	2.1	3.2	3.2	3.2
GAS COUNCIL No	EB 897 01	EB 897 02	EB 897 03	EB 897 04	EB 897 05

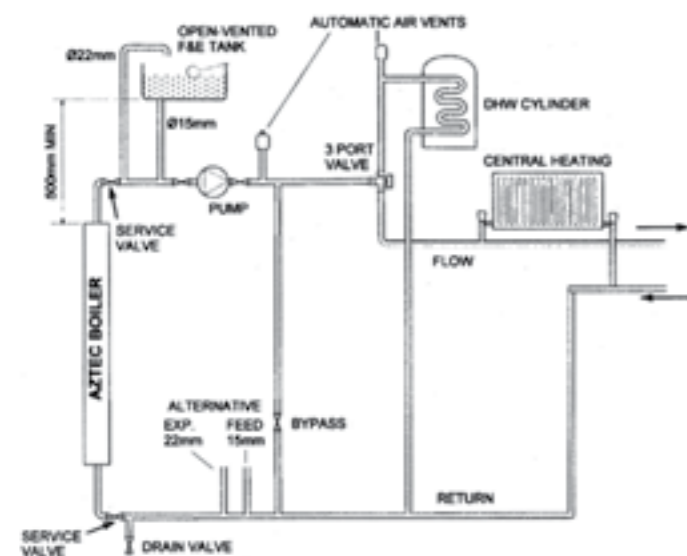
Please note: 1 kW = 3,412 Btus

Please note: Above 12 kW a 3 phase electrical supply would be required.

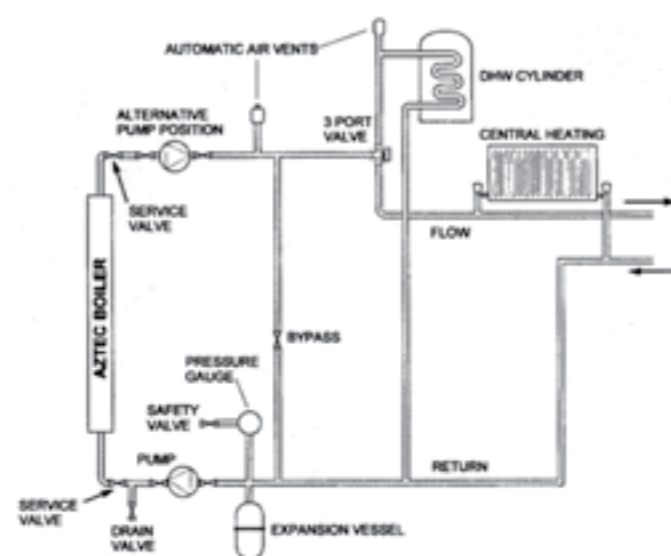


For larger installations, subject to power supply.

OPEN VENT SYSTEM



SEALED SYSTEM



Complete Heating Solutions

TR Engineering Limited, Thornccliffe, Chapeltown, Sheffield, S35 2PH, England

Tel: +44 (0) 114 257 2300 Fax: +44 (0) 114 257 1419

TR Engineering Limited is a company registered in England and Wales with company Reg No. 7321802

XC990826 04/11 issue 0

Copyright of all contents of this leaflet is vested in TR Engineering Limited. Any part may not be reproduced without permission. The contents of this leaflet are accurate at the date of printing but, because TR Engineering has a policy of continual development, it may be superseded and should be disregarded if specifications or appearances are changed. The statutory rights of the customer are not affected. E&OE's



THE ELECTRIC BOILER RANGE



www.trianco.co.uk/aztec

A market leading range of heating products from



The electric central heating boiler range from TR Engineering

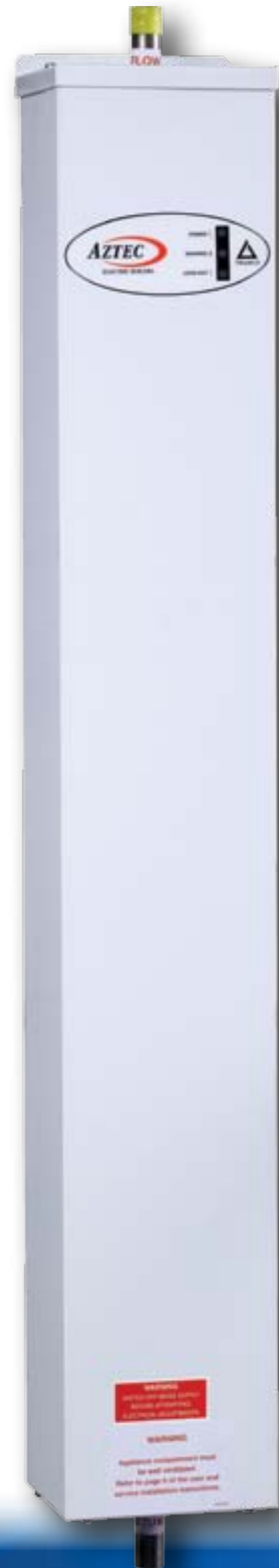
Trianco has a renowned pedigree for supplying sophisticated oil fired and solid fuel boilers for the domestic market - a natural extension of pioneering range cooker development in the early nineteenth century. It was a logical step therefore to combine this expertise with the application of modern technology to launch the Aztec electric boiler range, now brought to you by TR Engineering.

Aztec Classic electric boilers are wall mounted systems designed with practicality in mind - suitable for just about any application in any type of property. Fitted vertically and only requiring front access for servicing, the aztec classic is compact in size from 143mm deep x 165mm wide to between 550mm and 1080mm high, meaning they can be installed in the smallest of spaces. Once switched on, the Aztec is fully controlled by a solid state management system which automatically monitors its safety and running functions.

Designed to work on a fully pumped wet system, these boilers produce hot water by passing cold water over long life replaceable elements housed in an insulated stainless steel heat exchanger.

If you need to heat a house, flat, mobile home or apartment efficiently and effectively, the Aztec Classic has it all.

Available in 2kW, 6kW, 9kW, 11kW and 12 kW models



The Aztec Classic

Is one of the most versatile boiler ranges on the market today.

- △ Can be installed almost anywhere
- △ Outputs up to 12kW
- △ No flue or fuel supply tank required
- △ No noxious gases
- △ Easy to install
- △ Virtually maintenance free
- △ 99.8% efficient
- △ Replaceable elements
- △ Self diagnostic checking
- △ Soft switching to preserve element life and prevent interference
- △ Resettable thermal safety cut-out
- △ Compatible with solar power
- △ Comprehensive 2 year guarantee



Typical Applications

For a truly compact solution to heating needs when space is at a premium, the Aztec Classic is the answer. The boiler doesn't need a flue or fuel supply tank and is very quiet in operation, which makes it ideal for uses such as loft and home extensions, flats and apartments.

It's versatility is demonstrated by the way several boilers can be linked together to give greater output for supplying heat to your family home, subject to incoming power supply. From underfloor heating to conventional radiators, thousands of people across the UK have already realised that Aztec is the best option when gas or oil are not available and is the sensible choice over a storage heating system.



Apartments



Family Homes



Mobile Homes and Caravans



Flats